

Hatton's job will be done in collaboration with Centurion's job

CENTURION
TRAFFIC MANAGEMENT

Centurion Traffic Management
3B, Haigh Park Road
Stourton
Leeds
LS10 1RT

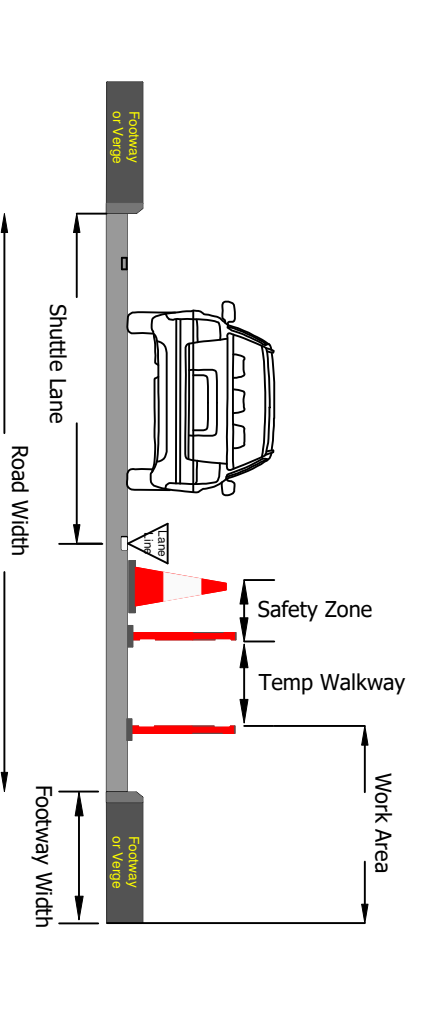
Tel: 0113 277 5360
E-mail: info@centuriontraffic.com
www.centuriontraffic.com

Date: 22-03-2022

Scheme: Exchange Place, DSN2/36, Middlesbrough,
Traffic Management: Full Closure

Measurement Key

Lane Width = N/A
Shuttle Lane = N/A
Sideways Safety Zone = N/A
Longways Safety Zone = N/A
Footway Width = N/A
Temporary Footway Width = N/A
Work Area = N/A



LOADING LIST

Qty 1 - Ref: 2101	Start of temporary diversion route	Diversion
Qty 1 - Ref: 2102	End of temporary diversion route	Diversion
Qty 1 - Ref: 2103	Start of temporary diversion route	Diversion
Qty 1 - Ref: 2104	End of temporary diversion route	Diversion
Qty 1 - Ref: 2105	Start of temporary diversion route	Diversion
Qty 1 - Ref: 2106	End of temporary diversion route	Diversion
Qty 1 - Ref: 2107	Start of temporary diversion route	Diversion
Qty 1 - Ref: 2108	End of temporary diversion route	Diversion
Qty 1 - Ref: 2109	Start of temporary diversion route	Diversion
Qty 1 - Ref: 2110	End of temporary diversion route	Diversion
Qty 1 - Ref: 2111	Start of temporary diversion route	Diversion
Qty 1 - Ref: 2112	End of temporary diversion route	Diversion
Qty 1 - Ref: 2113	Start of temporary diversion route	Diversion
Qty 1 - Ref: 2114	End of temporary diversion route	Diversion
Qty 1 - Ref: 2115	Start of temporary diversion route	Diversion
Qty 1 - Ref: 2116	End of temporary diversion route	Diversion
Qty 1 - Ref: 2117	Start of temporary diversion route	Diversion
Qty 1 - Ref: 2118	End of temporary diversion route	Diversion
Qty 1 - Ref: 2119	Start of temporary diversion route	Diversion
Qty 1 - Ref: 2120	End of temporary diversion route	Diversion
Qty 1 - Ref: 2121	Start of temporary diversion route	Diversion
Qty 1 - Ref: 2122	End of temporary diversion route	Diversion
Qty 1 - Ref: 2123	Start of temporary diversion route	Diversion
Qty 1 - Ref: 2124	End of temporary diversion route	Diversion
Qty 1 - Ref: 2125	Start of temporary diversion route	Diversion
Qty 1 - Ref: 2126	End of temporary diversion route	Diversion
Qty 1 - Ref: 2127	Start of temporary diversion route	Diversion
Qty 1 - Ref: 2128	End of temporary diversion route	Diversion
Qty 1 - Ref: 2129	Start of temporary diversion route	Diversion
Qty 1 - Ref: 2130	End of temporary diversion route	Diversion
Qty 1 - Ref: 2131	Start of temporary diversion route	Diversion
Qty 1 - Ref: 2132	End of temporary diversion route	Diversion
Qty 1 - Ref: 2133	Start of temporary diversion route	Diversion
Qty 1 - Ref: 2134	End of temporary diversion route	Diversion
Qty 1 - Ref: 2135	Start of temporary diversion route	Diversion
Qty 1 - Ref: 2136	End of temporary diversion route	Diversion
Qty 1 - Ref: 2137	Start of temporary diversion route	Diversion
Qty 1 - Ref: 2138	End of temporary diversion route	Diversion
Qty 1 - Ref: 2139	Start of temporary diversion route	Diversion
Qty 1 - Ref: 2140	End of temporary diversion route	Diversion
Qty 1 - Ref: 2141	Start of temporary diversion route	Diversion
Qty 1 - Ref: 2142	End of temporary diversion route	Diversion
Qty 1 - Ref: 2143	Start of temporary diversion route	Diversion
Qty 1 - Ref: 2144	End of temporary diversion route	Diversion
Qty 1 - Ref: 2145	Start of temporary diversion route	Diversion
Qty 1 - Ref: 2146	End of temporary diversion route	Diversion
Qty 1 - Ref: 2147	Start of temporary diversion route	Diversion
Qty 1 - Ref: 2148	End of temporary diversion route	Diversion
Qty 1 - Ref: 2149	Start of temporary diversion route	Diversion
Qty 1 - Ref: 2150	End of temporary diversion route	Diversion
Qty 1 - Ref: 2151	Start of temporary diversion route	Diversion
Qty 1 - Ref: 2152	End of temporary diversion route	Diversion
Qty 1 - Ref: 2153	Start of temporary diversion route	Diversion
Qty 1 - Ref: 2154	End of temporary diversion route	Diversion
Qty 1 - Ref: 2155	Start of temporary diversion route	Diversion
Qty 1 - Ref: 2156	End of temporary diversion route	Diversion
Qty 1 - Ref: 2157	Start of temporary diversion route	Diversion
Qty 1 - Ref: 2158	End of temporary diversion route	Diversion
Qty 1 - Ref: 2159	Start of temporary diversion route	Diversion
Qty 1 - Ref: 2160	End of temporary diversion route	Diversion
Qty 1 - Ref: 2161	Start of temporary diversion route	Diversion
Qty 1 - Ref: 2162	End of temporary diversion route	Diversion
Qty 1 - Ref: 2163	Start of temporary diversion route	Diversion
Qty 1 - Ref: 2164	End of temporary diversion route	Diversion
Qty 1 - Ref: 2165	Start of temporary diversion route	Diversion
Qty 1 - Ref: 2166	End of temporary diversion route	Diversion
Qty 1 - Ref: 2167	Start of temporary diversion route	Diversion
Qty 1 - Ref: 2168	End of temporary diversion route	Diversion
Qty 1 - Ref: 2169	Start of temporary diversion route	Diversion
Qty 1 - Ref: 2170	End of temporary diversion route	Diversion
Qty 1 - Ref: 2171	Start of temporary diversion route	Diversion
Qty 1 - Ref: 2172	End of temporary diversion route	Diversion
Qty 1 - Ref: 2173	Start of temporary diversion route	Diversion
Qty 1 - Ref: 2174	End of temporary diversion route	Diversion
Qty 1 - Ref: 2175	Start of temporary diversion route	Diversion
Qty 1 - Ref: 2176	End of temporary diversion route	Diversion
Qty 1 - Ref: 2177	Start of temporary diversion route	Diversion
Qty 1 - Ref: 2178	End of temporary diversion route	Diversion
Qty 1 - Ref: 2179	Start of temporary diversion route	Diversion
Qty 1 - Ref: 2180	End of temporary diversion route	Diversion
Qty 1 - Ref: 2181	Start of temporary diversion route	Diversion
Qty 1 - Ref: 2182	End of temporary diversion route	Diversion
Qty 1 - Ref: 2183	Start of temporary diversion route	Diversion
Qty 1 - Ref: 2184	End of temporary diversion route	Diversion
Qty 1 - Ref: 2185	Start of temporary diversion route	Diversion
Qty 1 - Ref: 2186	End of temporary diversion route	Diversion
Qty 1 - Ref: 2187	Start of temporary diversion route	Diversion
Qty 1 - Ref: 2188	End of temporary diversion route	Diversion
Qty 1 - Ref: 2189	Start of temporary diversion route	Diversion
Qty 1 - Ref: 2190	End of temporary diversion route	Diversion
Qty 1 - Ref: 2191	Start of temporary diversion route	Diversion
Qty 1 - Ref: 2192	End of temporary diversion route	Diversion
Qty 1 - Ref: 2193	Start of temporary diversion route	Diversion
Qty 1 - Ref: 2194	End of temporary diversion route	Diversion
Qty 1 - Ref: 2195	Start of temporary diversion route	Diversion
Qty 1 - Ref: 2196	End of temporary diversion route	Diversion
Qty 1 - Ref: 2197	Start of temporary diversion route	Diversion
Qty 1 - Ref: 2198	End of temporary diversion route	Diversion
Qty 1 - Ref: 2199	Start of temporary diversion route	Diversion
Qty 1 - Ref: 2200	End of temporary diversion route	Diversion

20x Barrier



Crown Copyright. All rights reserved.
Drawing to be read in conjunction with relevant method statement and risk assessment.
Please check for amendments before use.

Drawing Ref:
SB-10-07-20

Unauthorised reproduction infringes Crown Copyright and may lead to prosecution or civil proceedings.

Scale: Drawn: SB
Amended: AW

Authorised / Approved
GS